

Caino Design
T U R I N I T A L Y

MePa Bolle

[MePa Collection, engraved metal panels]

Caino Design

[MePa – Bolle]

Material : Stainless steel

Thickness (mm) : 0,3

Surface finish : Gloss

Width (mm) : 500

Length (mm) : 2500

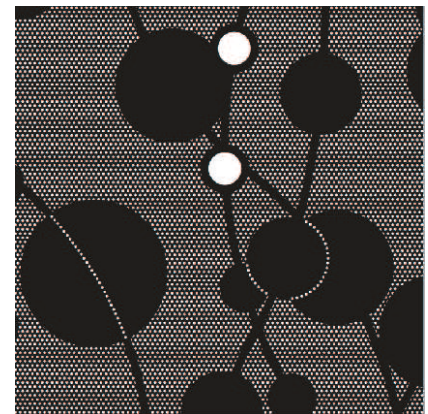
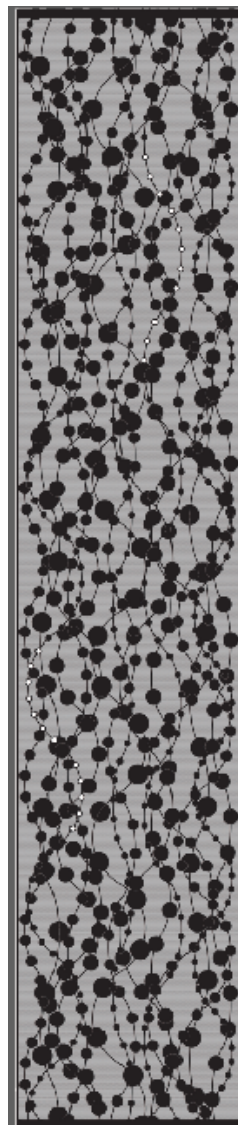
Weight (g) : <2500

Variants : no

Open area : 12%

Design : Caino Design

- Suitable for rail mounting system
- Suitable for hanging mounting system
- Panel size customizable upon request



Packaging: cardboard cylinder

Made in Italy