



**Caino Design**®

MePas

# Caino Design

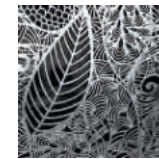
Caino Design combines the art of processing steel with a taste for beauty and artistic research, creating a new line of tasteful metal panels to enhance the feel of sophisticated environments with Italy's centuries-old talent for timeless elegance, quality, attention to detail and innovation.



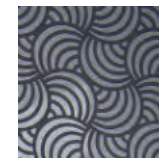
## MePas



MePas (Metal Panels) are fine stainless steel screens available in standard modules or custom sizes. Their charm lies in the subtle play between shadows, reflections, details and dimensions. MePas allow you to create glamorous and exclusive environments, and may be adapted or custom created for different styles and settings.



MePas are finely processed, yet made of extremely thin, hard stainless steel. Our technology allows complete freedom to realize detailed, delicate designs.



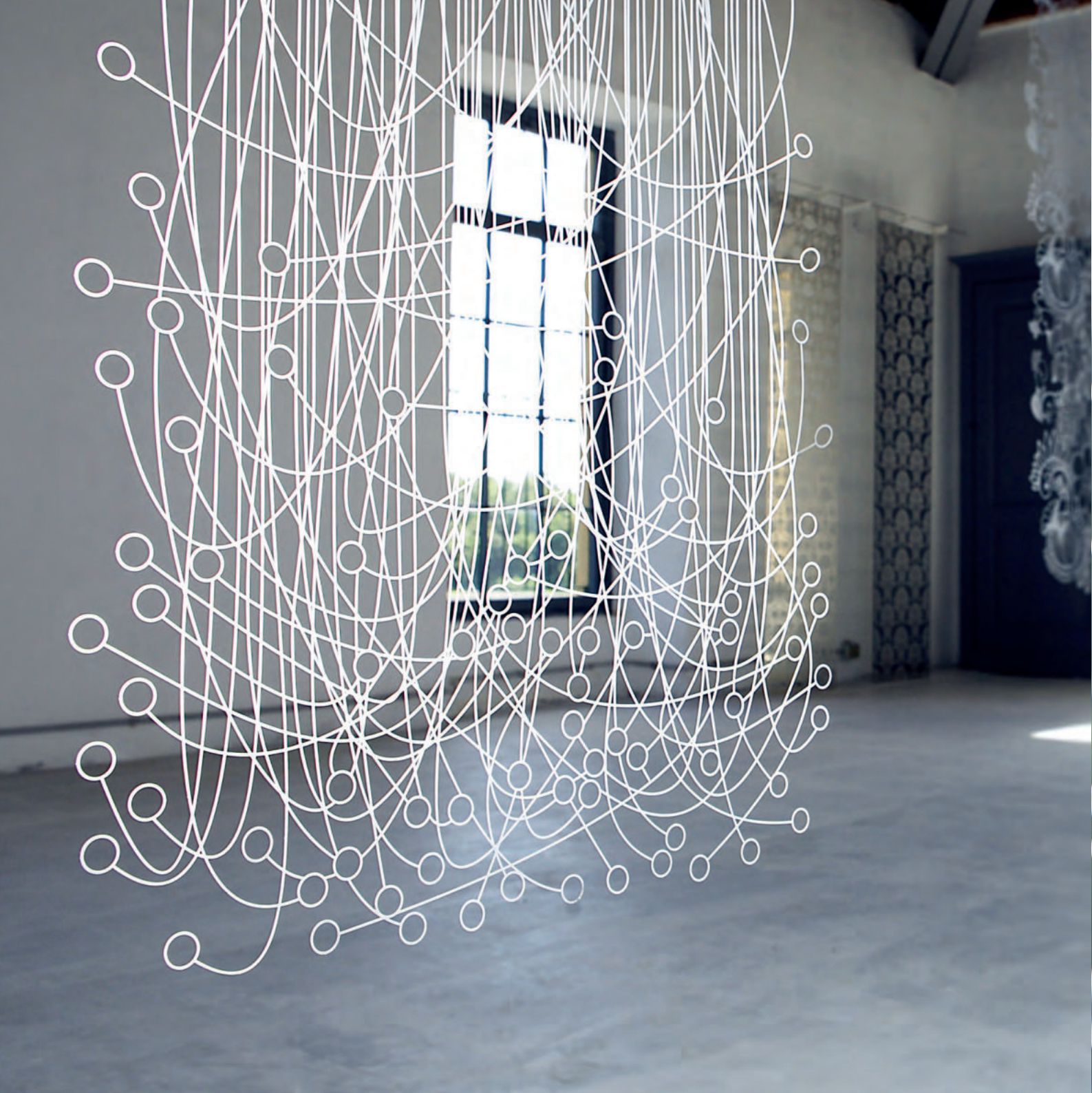
MePas offer infinite possibilities of interaction between different kinds of surfaces and finishes. New effects and atmospheres are achieved by alternating voids with shiny, satin, engraved or half-etched surfaces.







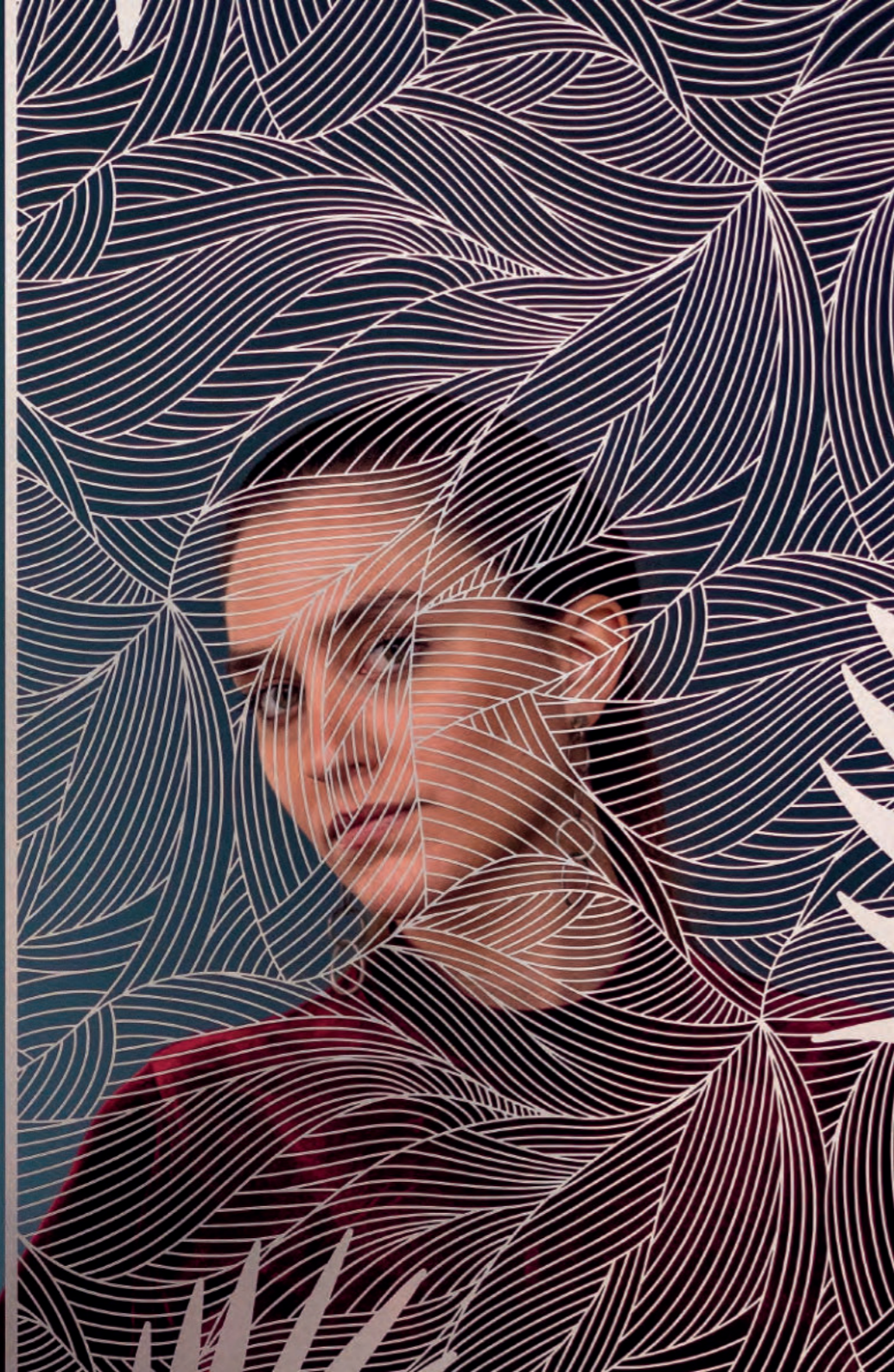


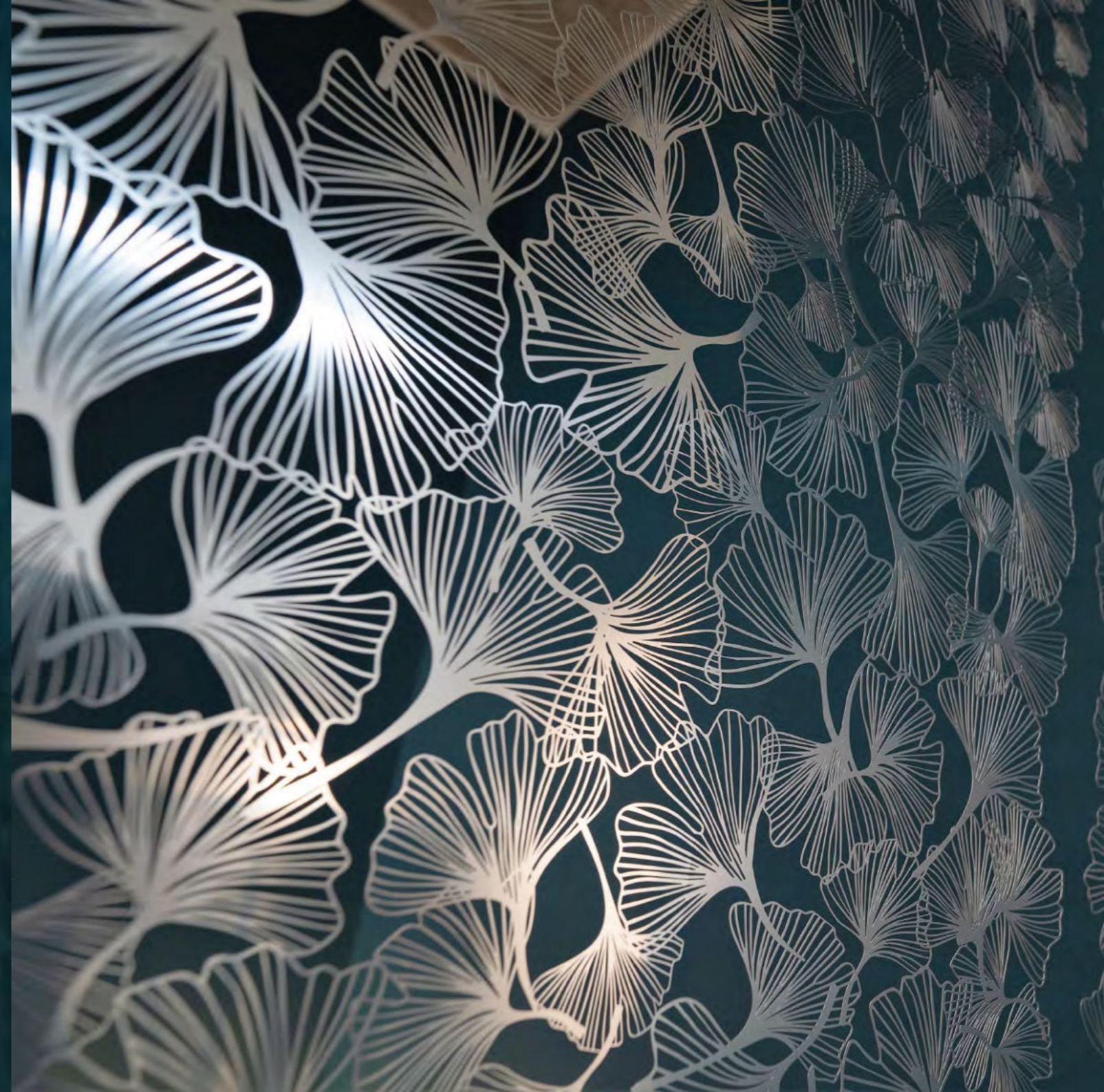




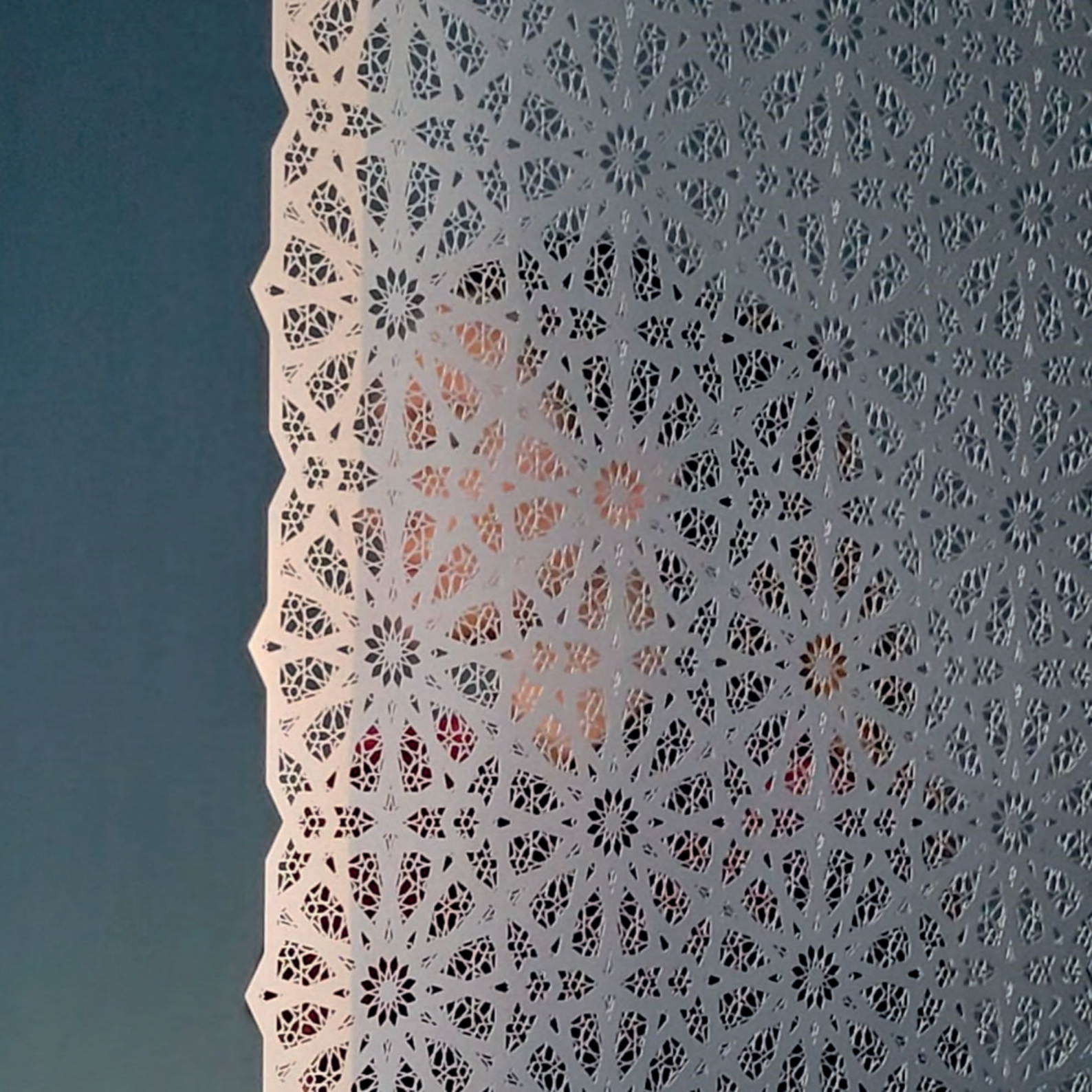
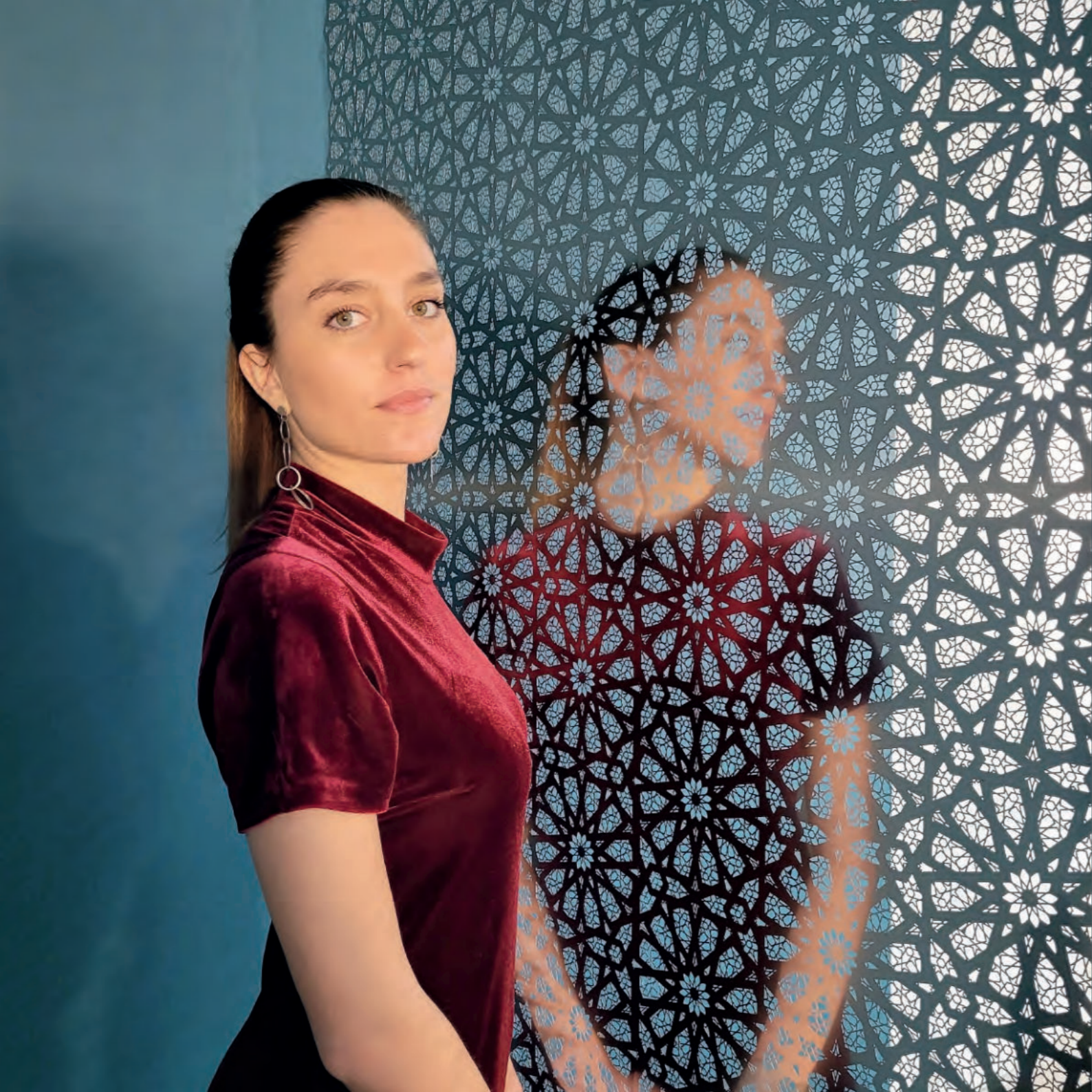










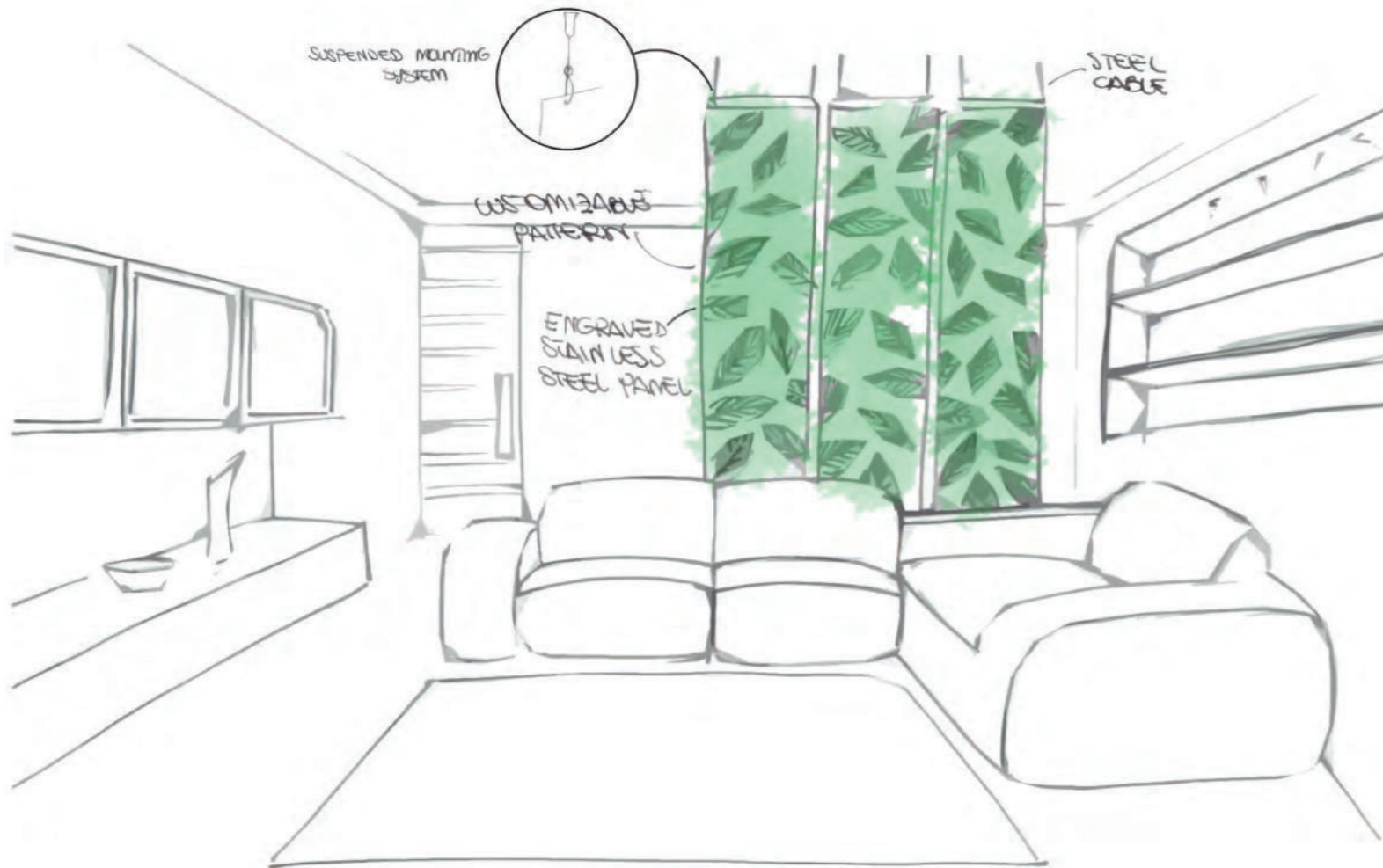


## Design ideas

MePas are elegant and contemporary, allowing your projects to explore new directions: they are wafer-thin but offer the resistance of steel, and may be joined or customized in a number of ways.

## Suspended mounting system – Space dividers

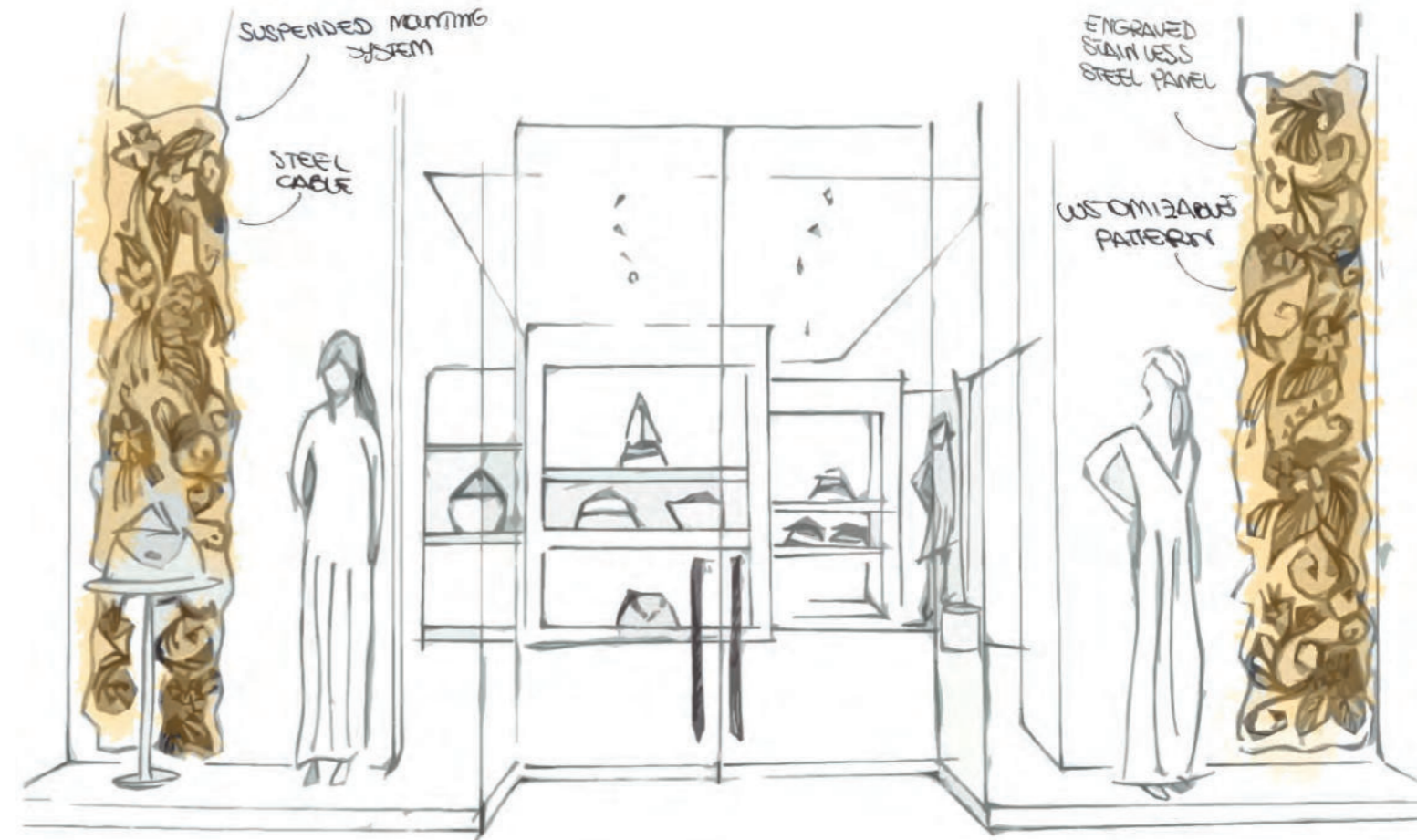
Create original environments



Light, airy screen dividers may be installed with a steel cable system fastened to the ceiling to enhance sophisticated, contemporary environments.

## Suspended mounting system – Decorative panels for shop windows

Bring a little sparkle to your displays

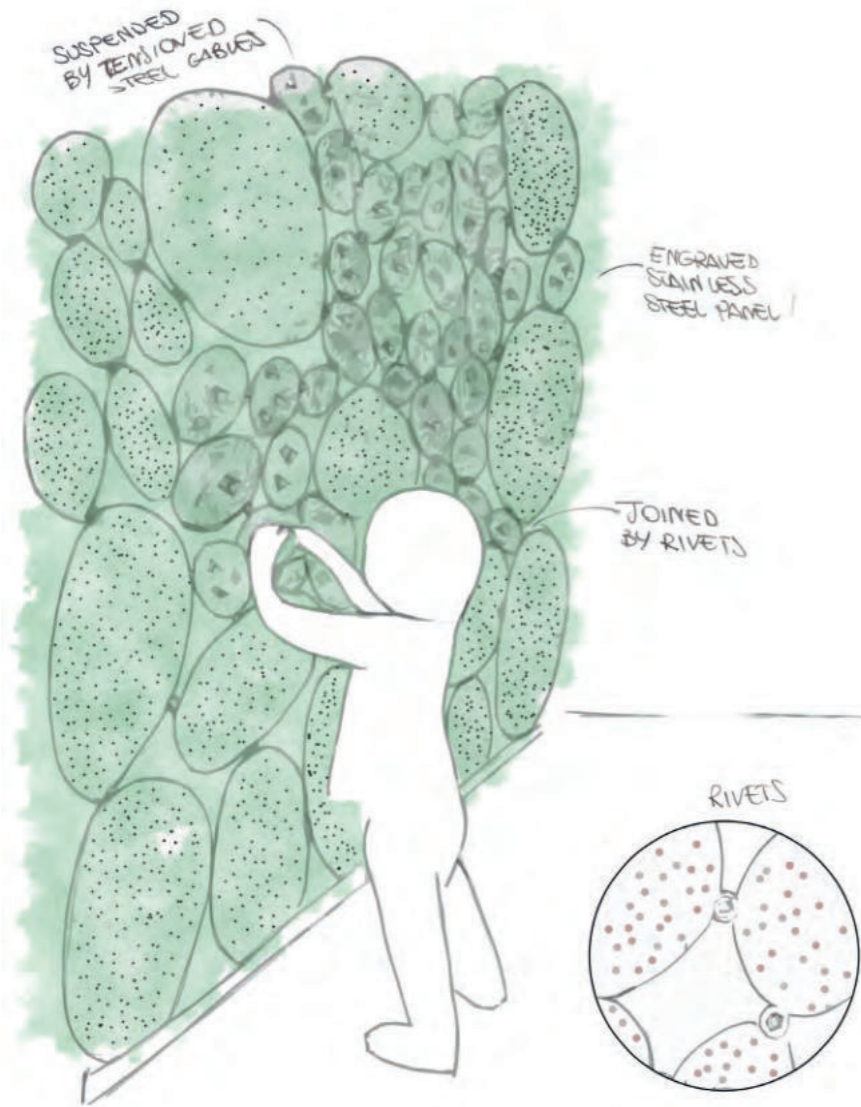


Glass and metal reflections combine to create beautiful play of light, colour and shadow, bringing your shop window to life.



## Suspended mounting system – Single panels joined by rivets

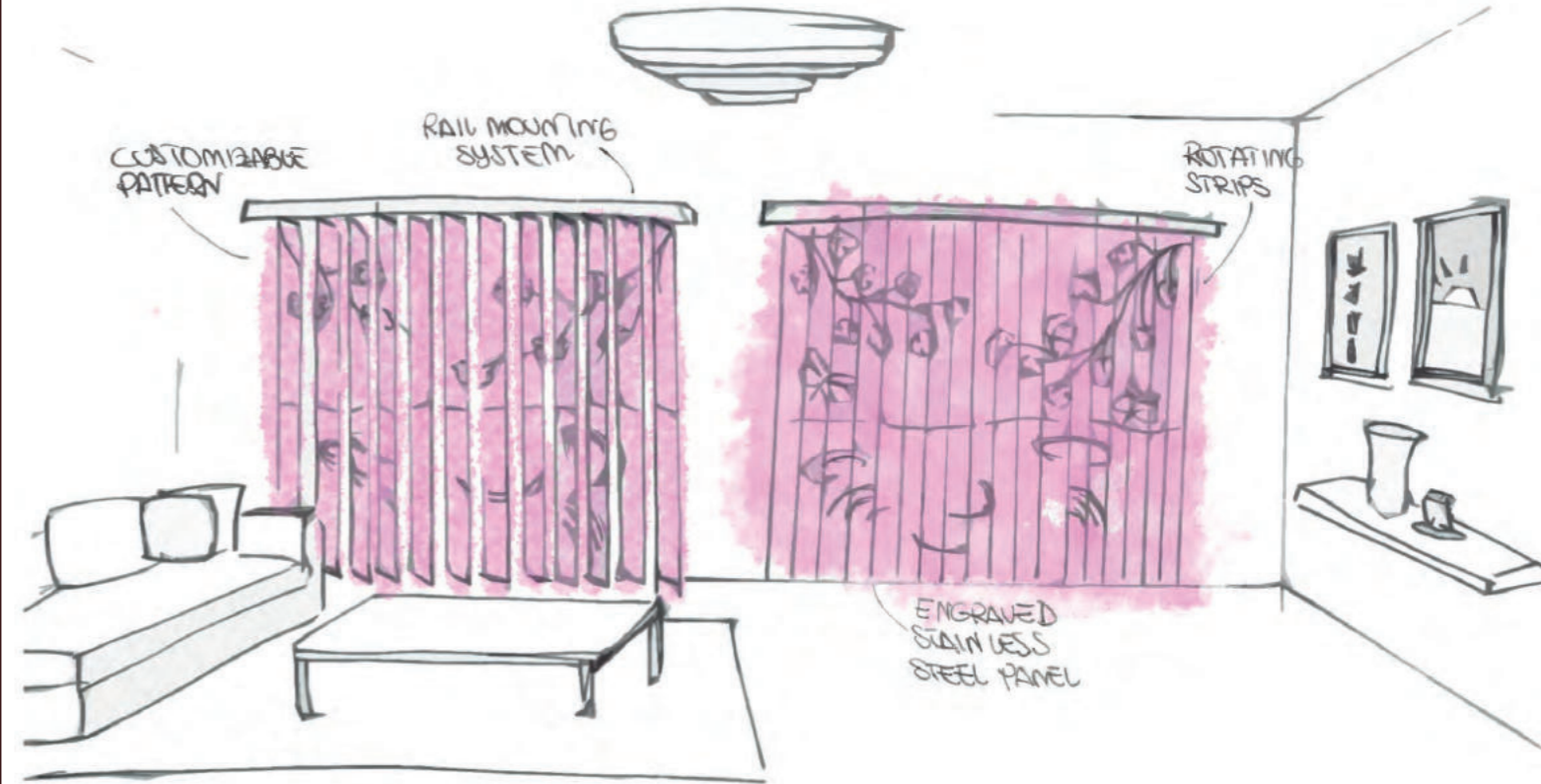
Expand your vision



Join MePas with small metal rivets to create vast, seamless walls, achieving stunning results like in the “Interference” project designed in 2012 by Nathalie Pozzi and Eric Zimmerman.

## Strip curtains

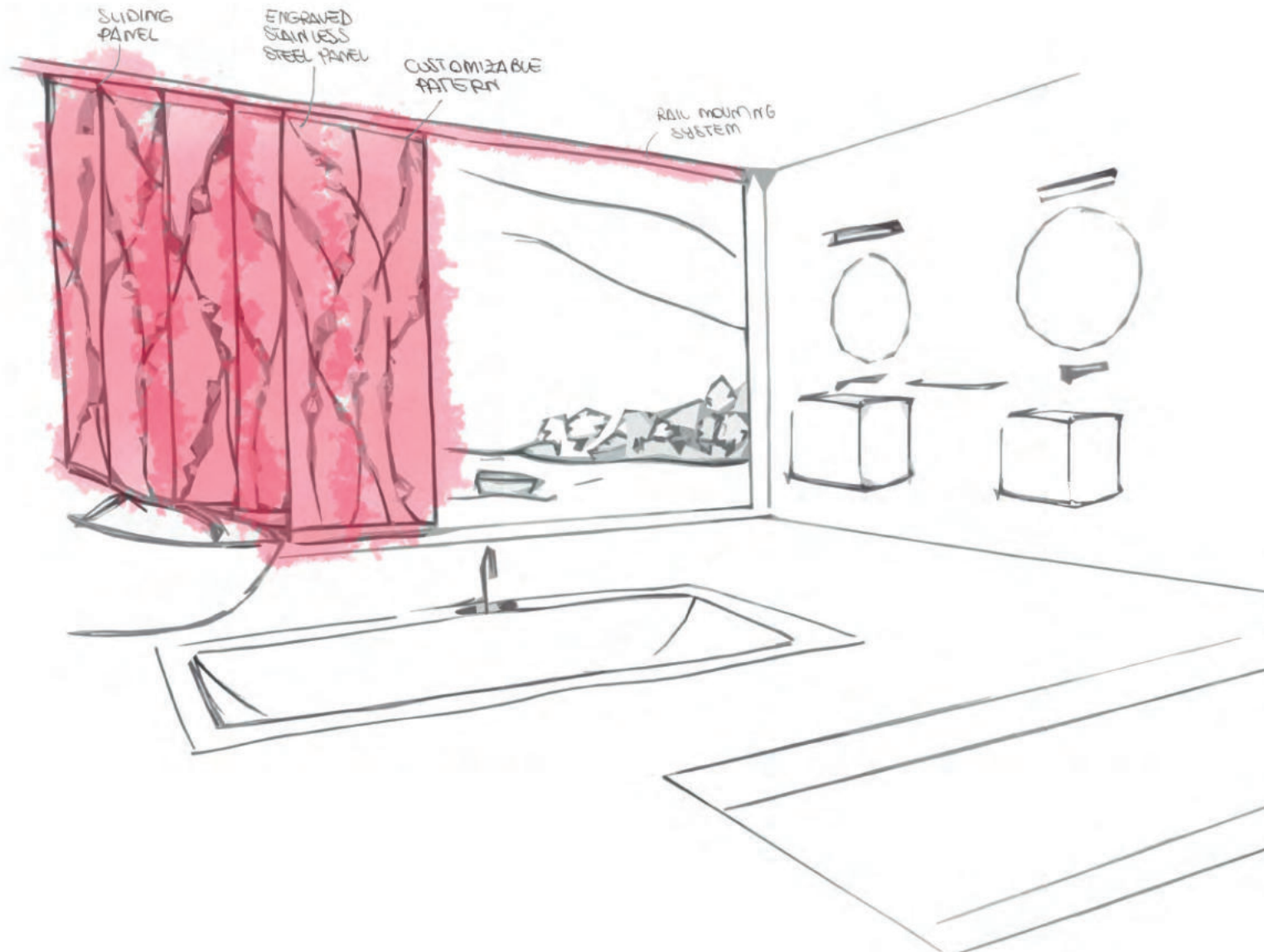
Filter light with an innovative, glistening curtain



An innovative take on classic strip curtains with engraved rotating elements.

## Rail mounting system – Curtain

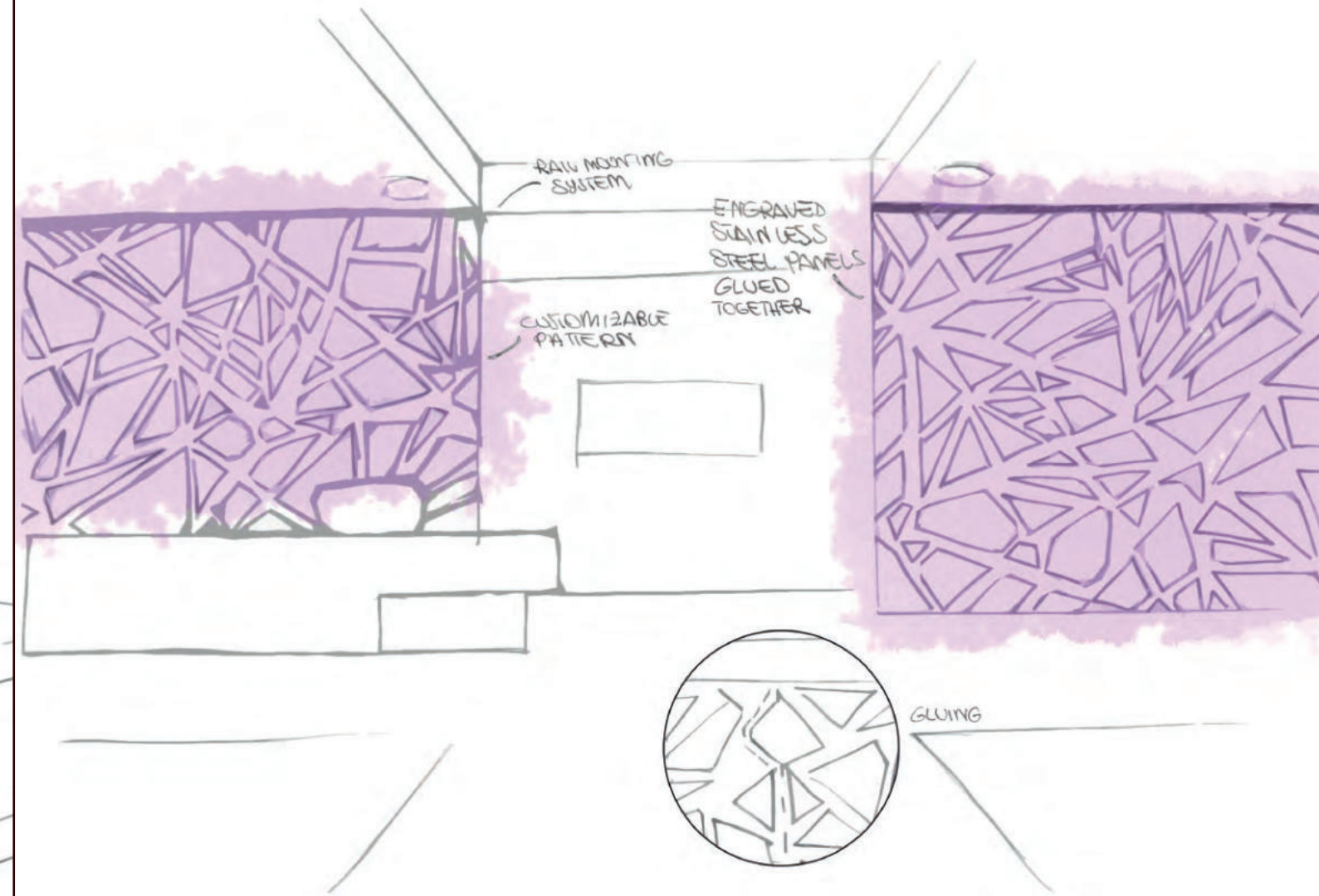
Be different, choose steel curtains



MePas bring uniqueness to all environments; by sliding on rails and overlapping they offer infinite possibilities of play of light and shadow to enhance the surroundings.

## Rail mounting system – Wall

Think big



Creatively transform open spaces inside offices and commercial galleries with the large format sliding system.

## Decorative wall panels

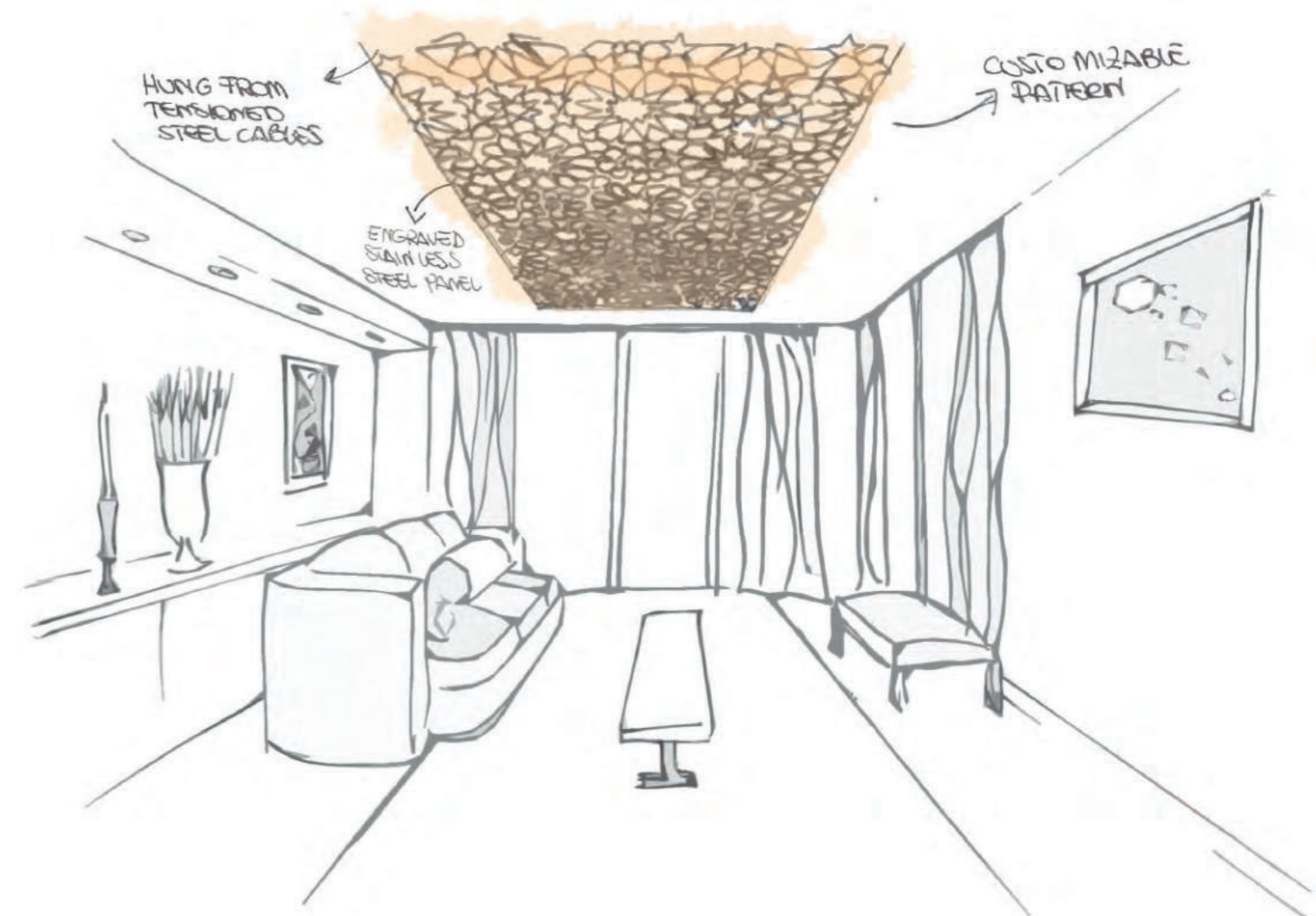
Brighten your walls



MePas may be mounted close to the walls with a special proprietary system.

## Decorative ceiling panels

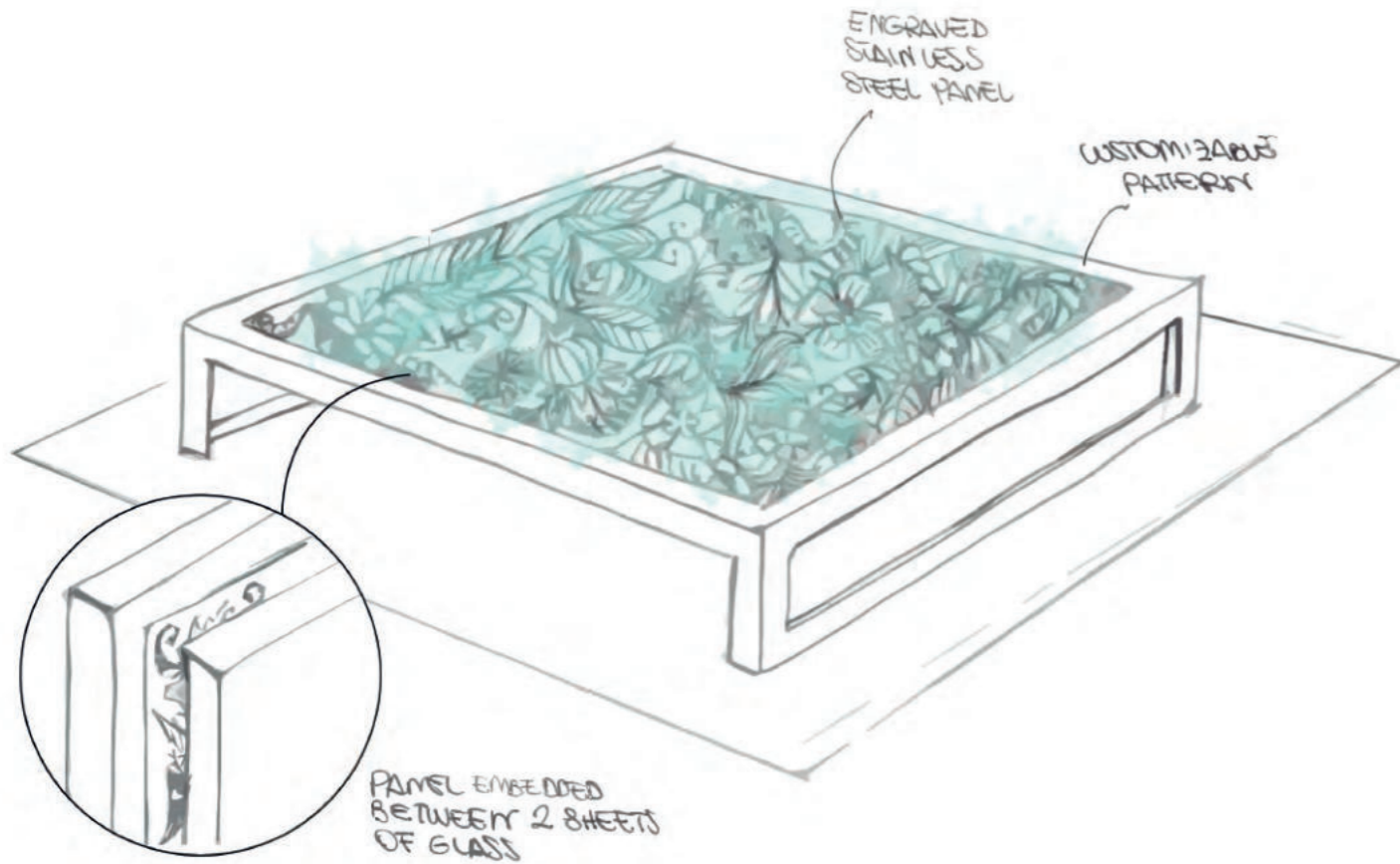
Let your imagination run wild



MePas are so versatile they can also be used to decorate your ceilings.

## Panels encased in glass

Dress up your furnishings



MePas are so thin they may be fitted between sheets of glass to create highly expressive, innovative furnishings.

## Framed Panels

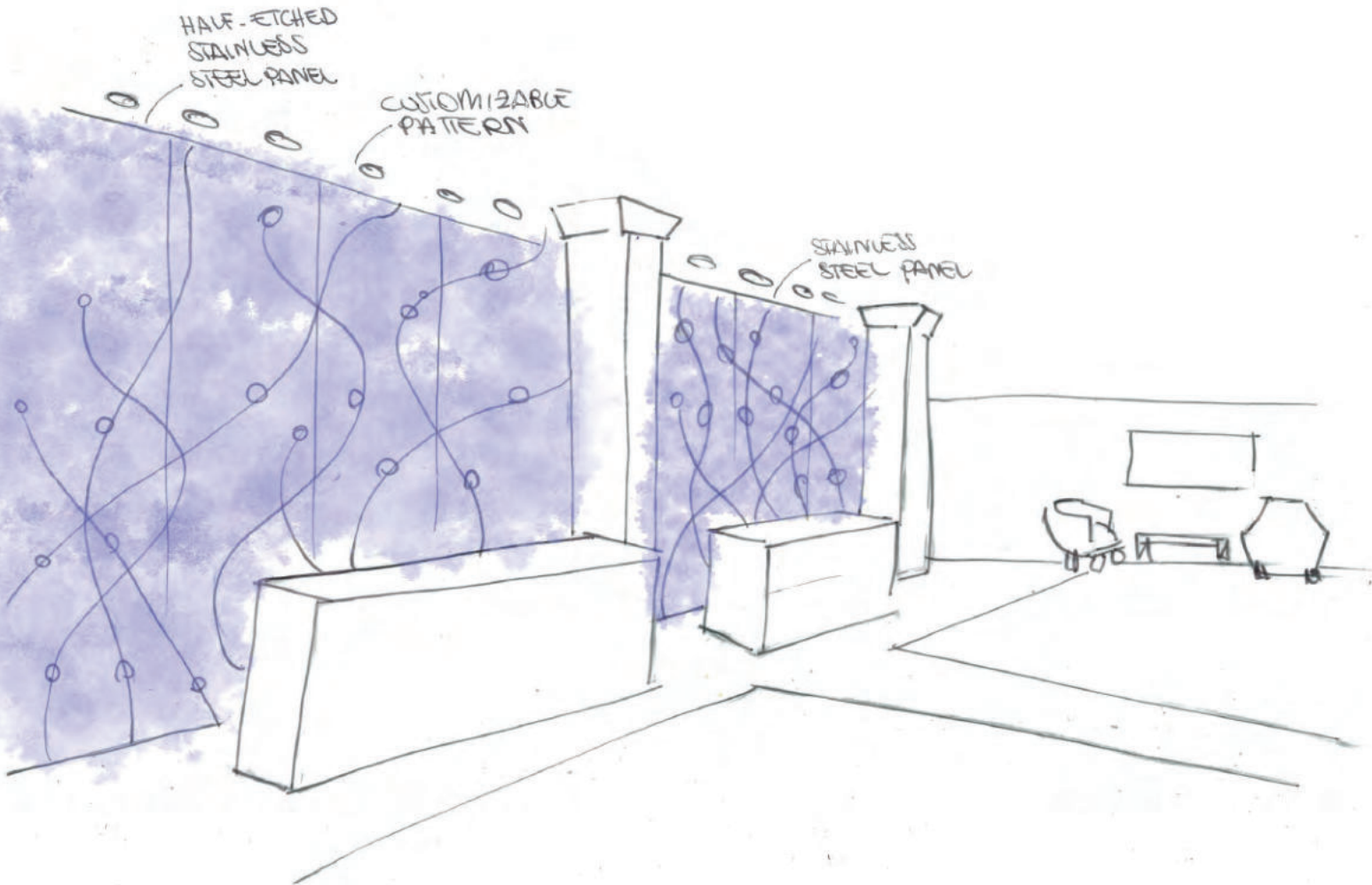
Creative elements for your projects



MePas can also be fitted inside wood or metal frames, to tailor your surroundings to your personal taste.

## Wall cladding

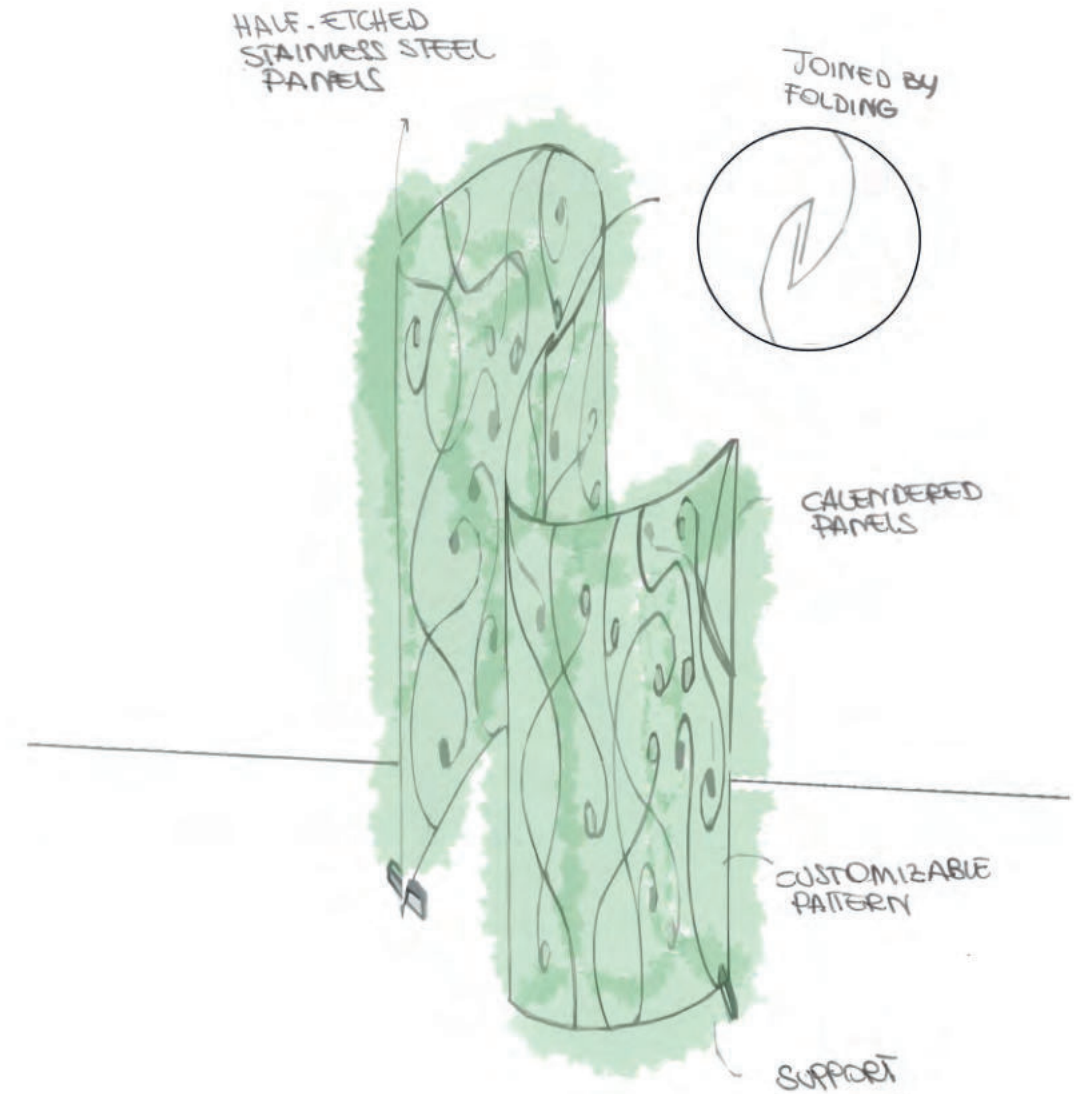
Let there be light



MePas featuring half-etched patterns may be installed on the walls to make the surroundings shine with personality.

## Curved wall panels

The charm of sinuous elegance



Calender-processed MePas are more rigid so they may be assembled and joined to create curved, stand alone elements.

# Highlights + Datasheets

The MePa collection features a range of decorative panels in stainless steel, just 0.3 mm thick.



Made in recyclable material



Long life



Full size panels: packed rolled up in a cardboard cylinder



Squared panels: cardboard box



Cost-effective shipping



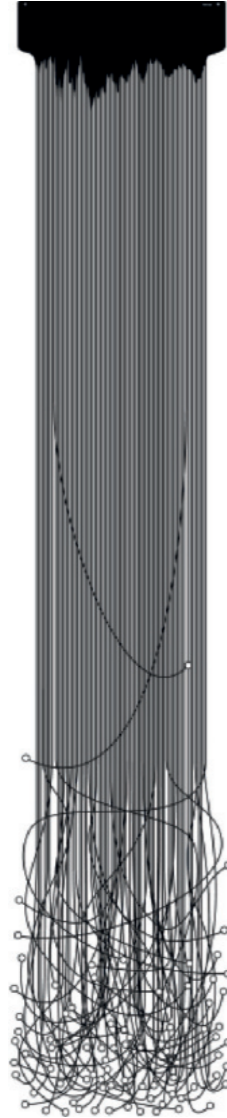
Quick and easy installation



Design : Takorabo

### Eden

Width : 480 mm  
Length : 2470, 2700, 2930 mm  
Weight : <900, <1000, <1100 g  
Open area : 69%



Design : Takorabo

### Synapse Major

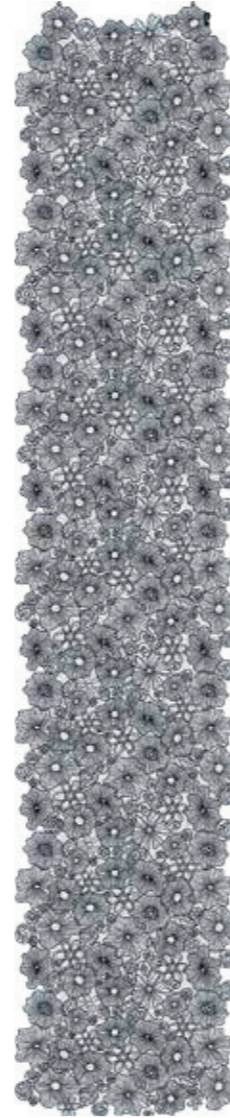
Width : 492 mm  
Length : 2500, 2750, 3000 mm  
Weight : <1100, <1200, <1300 g  
Open area : 72%



Design : N.O.W. Edizioni

### Daisy

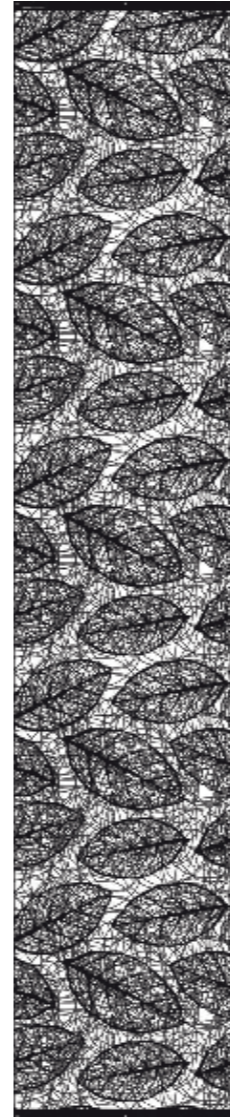
Width : 500 mm  
Length : 2500, 3000 mm  
Weight : <1800, <2100 g  
Open area : 42%



Design : N.O.W. Edizioni

### Bloom

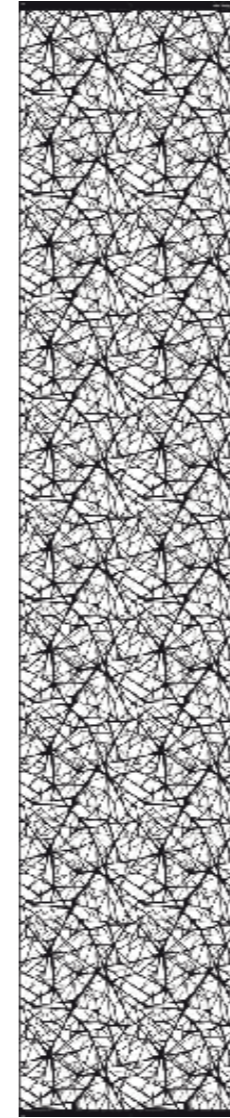
Width : 500 mm  
Length : 2500 mm  
Weight : <1000 g  
Open area : 69%



Design : N.O.W. Edizioni

### Lymph

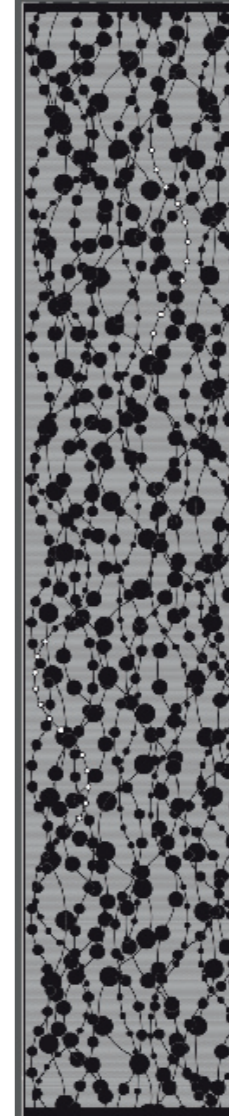
Width : 500 mm  
Length : 2500, 3000 mm  
Weight : <2100, <2500 g  
Open area : 32%



Design : Takorabo

### Nerea

Width : 500 mm  
Length : 2500, 2750, 3000 mm  
Weight : <900, <1000, <1100 g  
Open area : 71%



Design : Caino Design

### Bolle

Width : 500 mm  
Length : 2500, 3000 mm  
Weight : <2500, <3000 g  
Open area : 12%



Design : Caino Design

### Farfalle

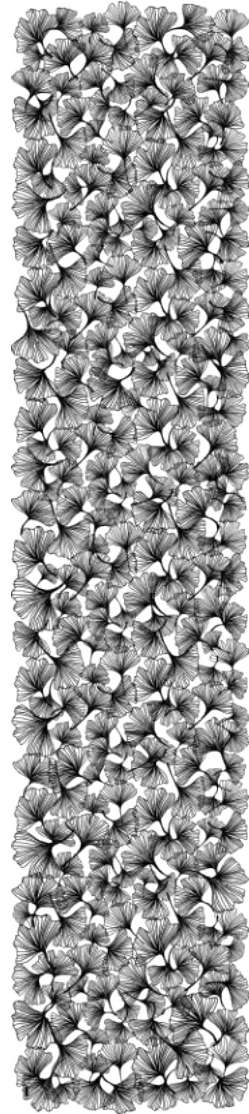
Width : 500 mm  
Length : 2500, 3000 mm  
Weight : <1800, <2200 g  
Open area : 40%



Design : Caino Design

### Palme

Width : 500 mm  
Length : 2350 mm  
Weight : <1500 g  
Open area : 52%



Design : Caino Design

### Gingko

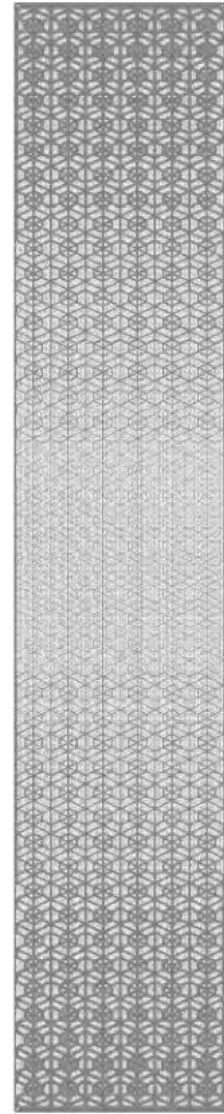
Width : 500 mm  
Length : 2350mm  
Weight : <1000 g  
Open area : 69%



Design : Caino Design - Type A

### Nuance A

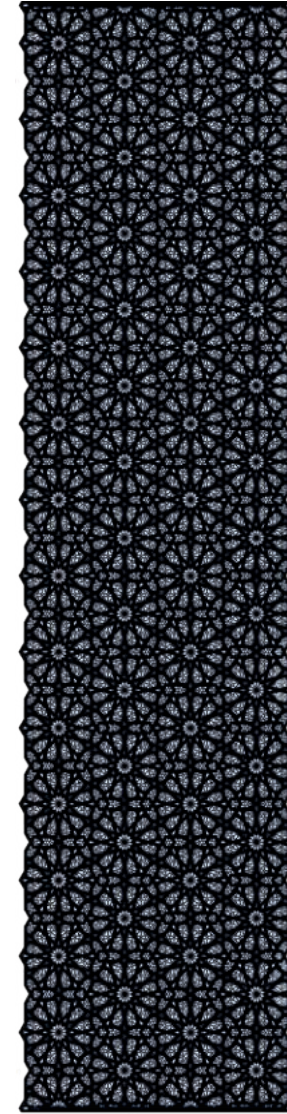
Width : 500 mm  
Length : 2350 mm  
Weight : <1100  
Open area : 62%



Design : Caino Design - Type B

### Nuance B (upon request)

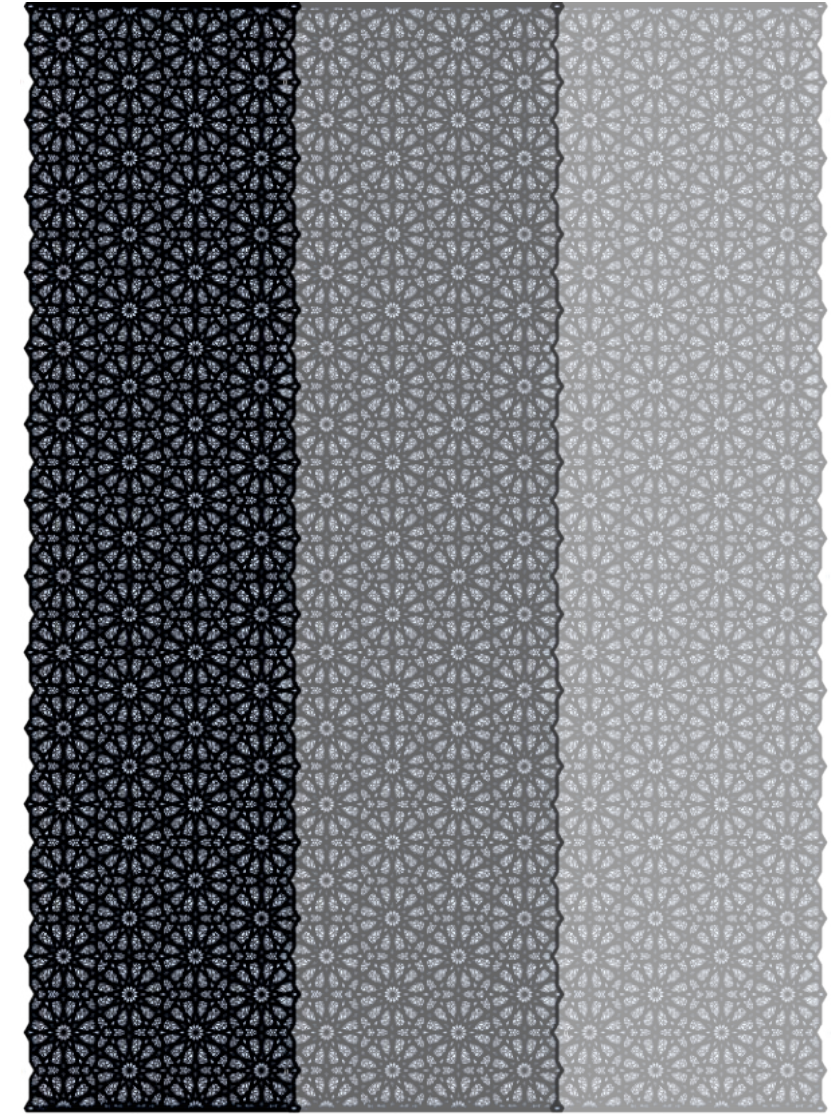
Width : 500 mm  
Length : 2350 mm  
Weight : <1300  
Open area : 54%



Design : Caino Design

### Zahra

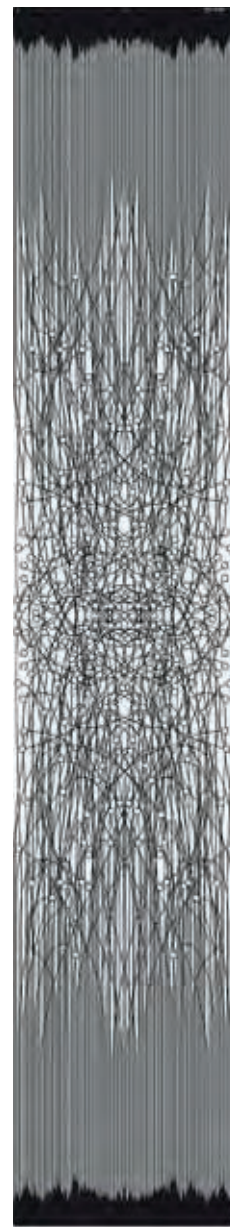
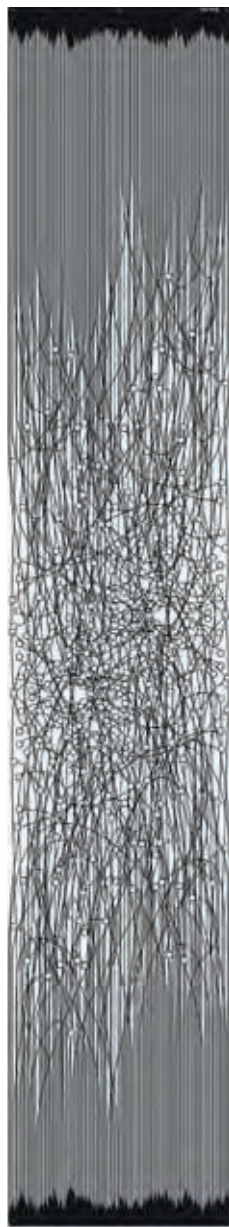
Width : 580 mm  
Length : 2310 mm  
Weight : <2300 g  
Open area : 29%



### Zahra Seamless

Width : 580 mm (1x); 1130 mm (2x); 1686mm (3x)  
Length : 2310 mm  
Weight : <2300 g (1x)  
Open area : 29%





Design : Takorabo

### Synapse Modular

Width : 500 mm  
 Length : 2750, 3000 mm  
 Weight : <1300, <1400 g  
 Open area : 63%

### Recommended combinations

A + B + C  
 B + C +  $\overline{B}$   
 A + B +  $\overline{B}$  +  $\overline{A}$   
 A + B + C +  $\overline{B}$  +  $\overline{A}$



Design : Takorabo



A



B



C



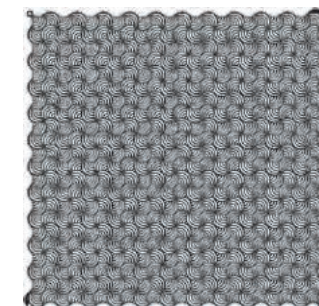
D



E

### Adam

Width & Length : 500 mm  
 Weight : <500 g  
 Open area : 29%



### Moses

Width & Length : 500 mm  
 Weight : <300 g  
 Open area : 56%



Design : Takorabo

# Accessories

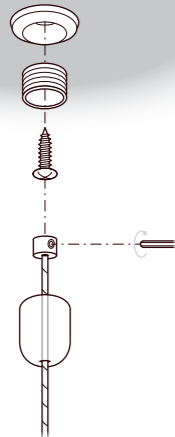
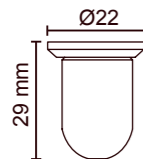
# Suspended mounting system

Ceiling cable tensioner with washer  
Chrome or satin finish  
CDHSC



## Mounting instructions

Unscrew base, insert a screw.  
Screw will nest in the base.  
Screw body back onto base.

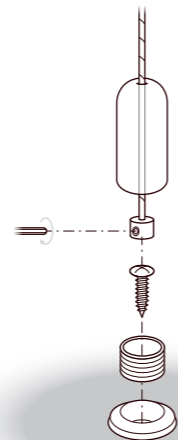
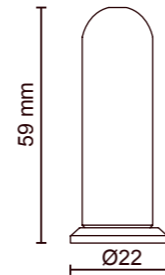


Floor cable tensioner with washer  
Chrome or satin finish  
CDHSF



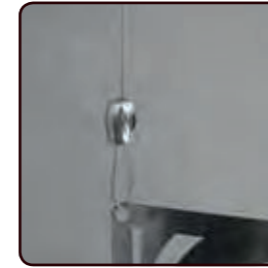
## Mounting instructions

Unscrew base, insert a screw.  
Screw will nest in the base.  
Screw body back onto base.



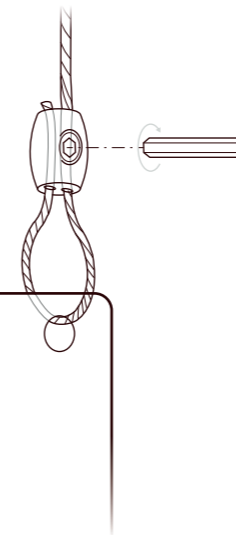
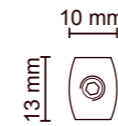
# Suspended mounting system

Olive clip for cable noose  
Chrome or satin finish  
CDHSO



## Mounting instructions

Insert cable into olive clip,  
panel and olive clip again.  
Tighten the screw.  
Cut excess cable.



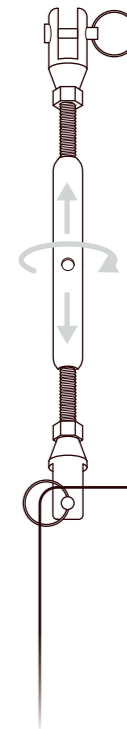
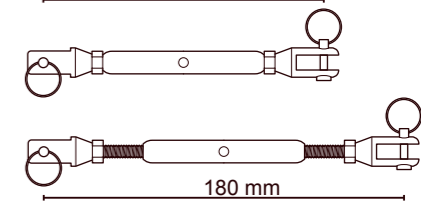
Turnbuckles tensioner  
Stainless steel  
CDHST



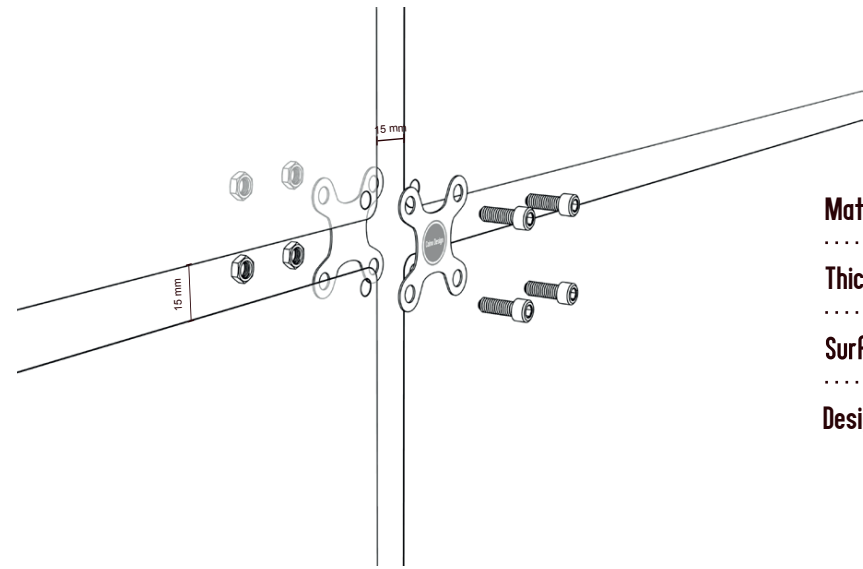
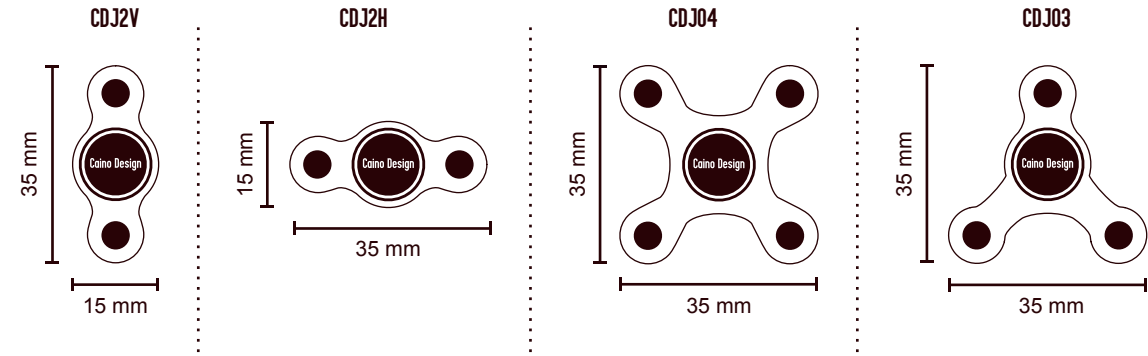
Minimum size



Maximum size

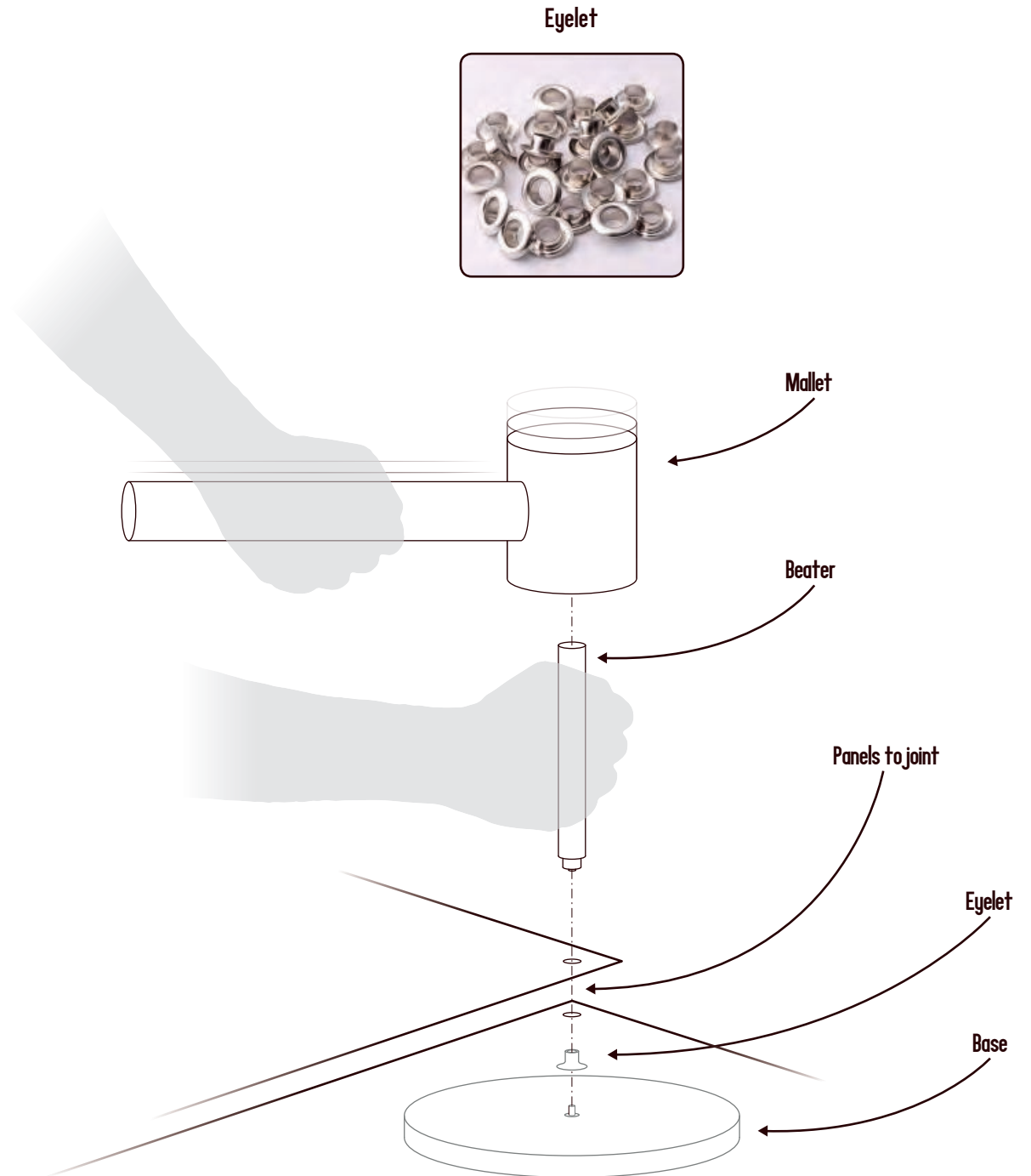


# Squared panels connectors

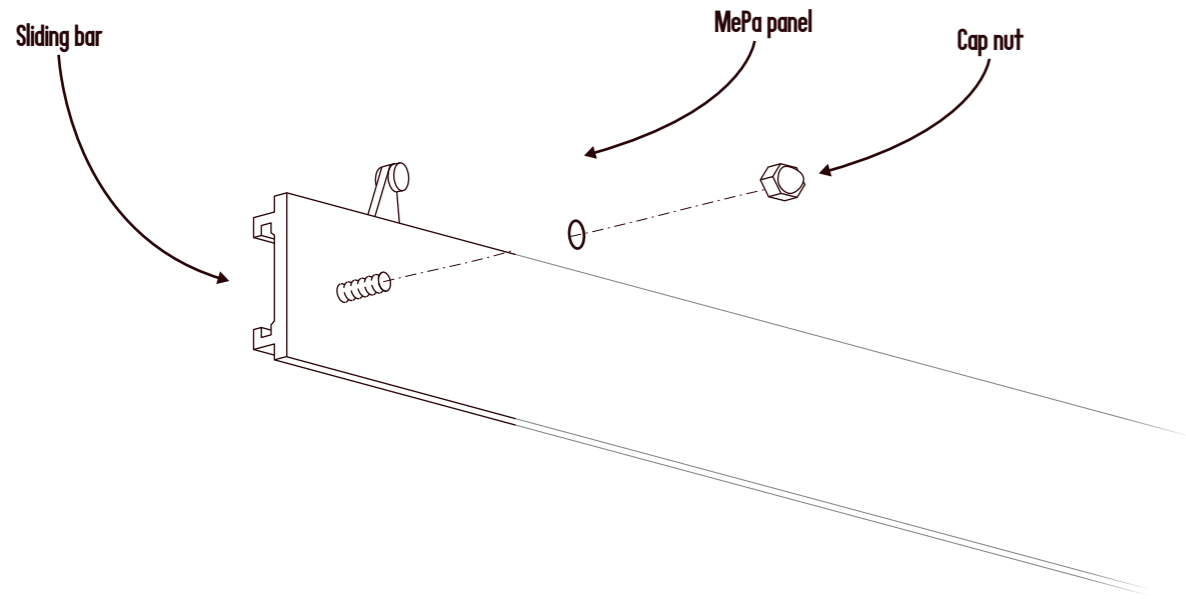


**Material :** Stainless Steel  
**Thickness :** 0,3 mm  
**Surface finish :** Gloss  
**Design :** Takorabo

# Connection by eyelets

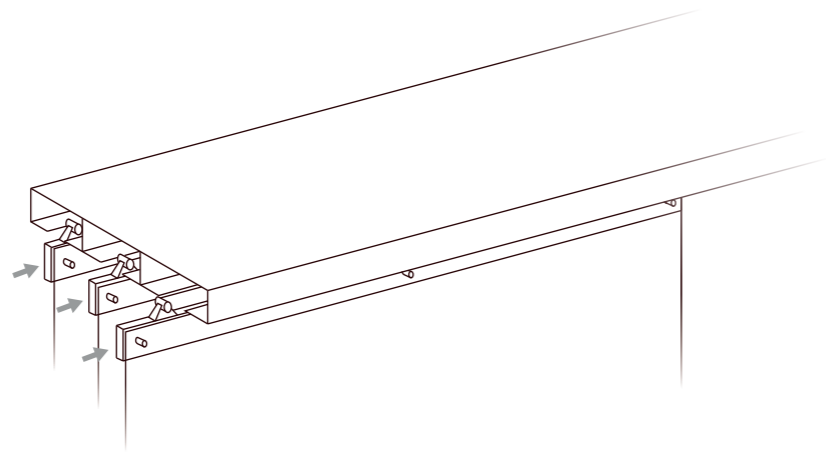


# Rail mounting system



## Mounting instructions

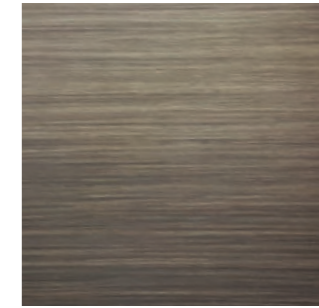
Fix the rail to the wall or to the ceiling.  
Fix the panels to the sliding bar.  
Screw the 3 cap nuts.



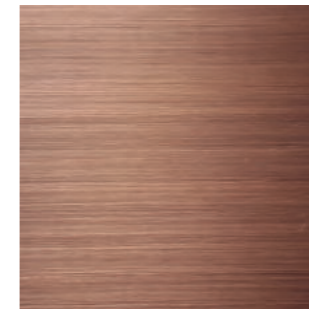
# Finishes



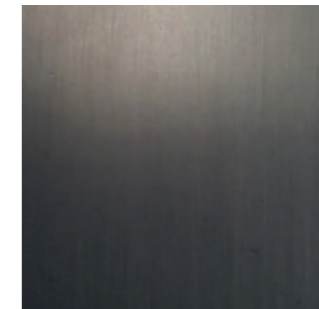
**Stainless steel**  
Standard finish



**Matt bronze brass**



**Matt bronze copper**



**Matt burnished**

Panels may also be painted with RAL colours.



Disclaimer: Caino Design products are galvanized and painted by hand one at a time. It is therefore very rare to create identical items. There may be natural blemishes/variations that are not product flaws. Such variations are inherent in the manufacturing of handmade products.

## Photos

Luca Casonato  
Erica Rodriguez  
Stefano Druetta  
Houston Agency

## Graphic project

Alessandra Posati  
Davide Spataro

## Contacts

Caino Design, Strada Cebrosa, 64  
10036 Settimo Torinese (TO), Italy  
Tel +39 011 19 66 50 11  
[info@cainodesign.com](mailto:info@cainodesign.com)  
[www.cainodesign.com](http://www.cainodesign.com)



Release 3.2  
Printed in Italy

